

HOMES & GARDENS[®]

Imaginative interiors

EVOCATIVE HOMES LAYERED
WITH COLOUR AND TEXTURE

- OUTDOOR ROOMS
AND GLASS EXTENSIONS
- COTTAGE GARDEN
IDEAS AND ADVICE

A BEAUTIFUL
EASTER
ITALIAN-STYLE
FEASTS BY
THEO RANDALL
TABLESCAPES
WITH SEASONAL
FLOWERS

TIME TO ESCAPE
WALLPAPERS
AND FABRICS
TRANSPORT US TO
DREAM DESTINATIONS

DAZZLING
& EASY
DECOR
UPDATES

APRIL 2021

VARIETY SHOW

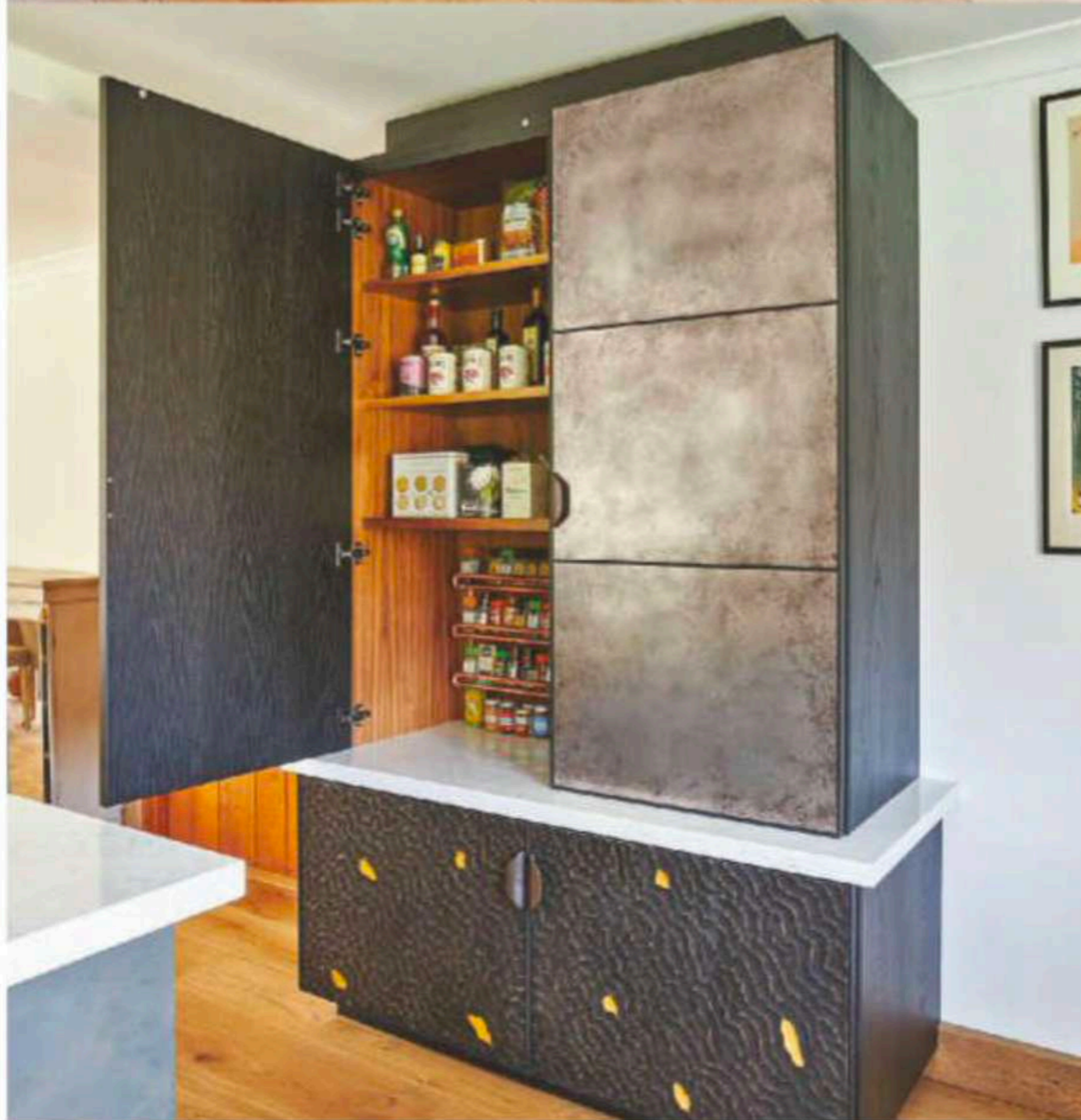
CHARLIE SMALLBONE, FOUNDER OF LEDBURY STUDIO, LAYERED METALLICS AND TIMBERS TO CREATE THIS EXUBERANTLY ECLECTIC KITCHEN



1 STRIKING STYLE

To achieve a 'furniture' feel with the look of a living space we mixed a variety of heights, scales and finishes. So the worktops are lower beneath the copper cupboards flanking the sink to provide an extra design difference. We also added our signature 'Top Hats' to the tall units – this dark shadowline elongates the cabinetry, making the ceiling appear higher.

KITCHEN CASE STUDY



2 INFORMAL AIR

The owners of this Sussex farmhouse fell for our Metallics collection after spotting it in a magazine. As a result, they came into the studio and declared it was exactly what they had been seeking; something informal and eclectic, relaxed but interesting. One owner works in an auction house, so loves antiques, and they both enjoy entertaining – there's a 12-seat dining table just beyond the island.

3 TEXTURAL TOUCH

On the base of the breakfast cupboard and also on the tall unit that hosts the ovens, we introduced our Choppy Water finish. This is oak that has been hand carved by one of our artisans into a pattern that represents the natural undulations of water. It lends an interesting, deep texture to our cabinetry. The oak is stained dark, with accents picked out in gold-leaf appliqué.

SOURCEBOOK

The Metallics **kitchen** starts from £50,000; Valdena antiqued mirror **splashbacks**, £450sq m, Ledbury Studio. Arabesque Quartz **worktops** and integrated **sink**, £840sq m installed, Stone Italiana. H7260 BP Pureline single **oven**, £1,449; DGC7440 Pureline XL steam combination **oven**, £2,499; KM7575 FR induction **hob**, £1,949; G7150 SCVi fully integrated **dishwasher**, £1,249, all Miele. Heaven 2.0 SLIM ceiling **extractor**, from £1,265, Faber. Cascata Square Spout Copper-and-Black mixer **tap**, £230, The 1810 Company. ICBN3386 Premium integrated **fridge freezer**, £2,299, Liebherr.

■ Charlie Smallbone has been pushing kitchen design boundaries for more than 40 years, first as founder of the iconic brand Smallbone of Devizes and now as the driving force behind Ledbury Studio. Established in 2019, this Notting Hill-based company focuses on kitchens that harness the beauty of original materials without neglecting function and ease, utilising the skills of artisan craftsmen.