

HOMES & GARDENS

Fresh ideas

AW24 TRENDS

LATEST FABRICS
& WALLPAPERS

CLEVER WAYS
WITH PAINT

We reveal
the designers
you need
to know about

THE
CREATIVES
ISSUE

The
joy of
decor

EYE-CATCHING INTERIORS
FULL OF PERSONALITY

October 2024



ULTIMATE KITCHENS



OCTOBER 2024



Style lookbook

FIRE YOUR IMAGINATION WITH OUR PICK OF THE
MOST CREATIVE KITCHEN PROJECTS AROUND

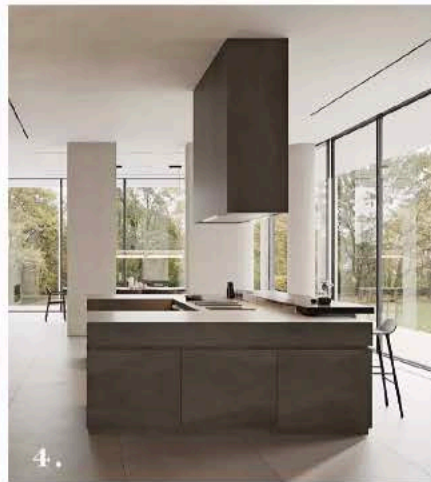
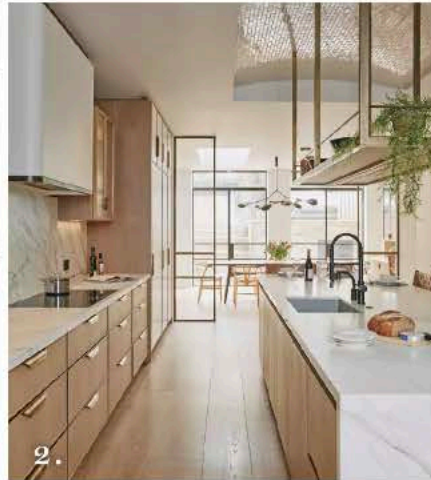


LAYERED TEXTURE

Design studio Albion Nord drew upon a 'kitchen garden' aesthetic for this townhouse in London's Chelsea Barracks, featuring a bespoke kitchen from Halstock. 'Using natural materials, rustic pots and large arrangements of foliage, we worked to seamlessly blend the kitchen with the outdoor terrace,' says creative director Camilla Clarke. A mix of materials, from handmade plaster pendants and leather stools to a marble island and bronze extractor, creates contrast and a rich, textured feel.



ULTIMATE KITCHENS



1. EASTERN INFLUENCES

'The most pleasing aspect of this kitchen is the restrained palette,' says designer Matt Higgs from Chamber Furniture, who conceived the space for an architect returning from life in the Far East. Cherner counter stools from Aram provide a shapely focal point, along with the Gaia pendant from Ochre.

2. HUNG UP

In this striking space by Charlie Smallbone of Ledbury Studio, the hanging rack, suspended from a tiled arched ceiling, is the most eye-catching detail of all. 'As well as providing vital task lighting, this sculptural piece serves as additional storage and looks great filled with house plants,' says the designer.

3. CALL FOR CURVES

A large arched wall brings all the drama. 'When working with a home that has neoclassical architecture and arches, I love to add more to continue the original details,' says Connie Vernich of Vernich Interiors. The kitchen by Mid South Custom Cabinets is paired with Jagger stools from Arhaus.

4. ENJOY THE SHOW

Entrusted to deliver a statement kitchen for entertaining and hosting events in this room, Krieder's design team nailed the brief, working in collaboration with Offset Architects. A large U-shaped island acts as a monolithic theatre for culinary displays, while also working as a room divider.

PHOTOGRAPHS (RED THREAD) ANSON SMART (EASTERN INFLUENCES)
WILL HOUGHTON (CALL FOR CURVES) CAROLINE SHARPBACK

