

HOMES & GARDENS

HOW TO DECORATE NOW

Fresh inspiration for a new season

**DISCOVER TODAY'S
DESIGN DIRECTIONS**

OUR EDIT OF SS26
FABRIC, WALLPAPER
AND FURNITURE

**SPRING
SHOPPING**

Rugs and runners
Window treatments
The best new buys
for your garden

April 2026



Kitchens

YOUR GUIDE TO DESIGNING THE PERFECT SPACE



HOMES
& GARDENS



STYLE LOOKBOOK

Impressive designs and smart ideas that combine functionality with exceptional taste

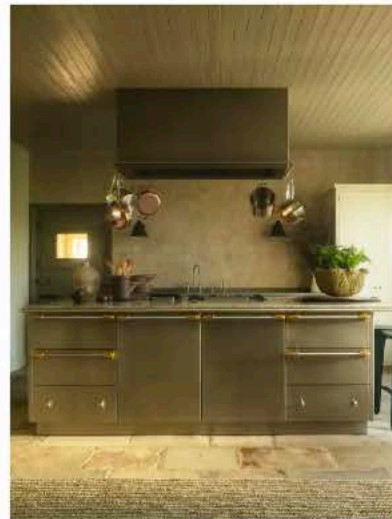
FEATURE CHARLOTTE LUXFORD PHOTOGRAPH DEAN HEARNE

WARM WELCOME

In this townhouse kitchen with its soaring ceiling and period details, dark green cabinetry and a rich walnut island help to ground the space, adding depth and intimacy to a room that could otherwise feel stark. Marble worktops bring subtle texture and balance to the darker palette, while touches of brass add warmth. 'The overall design takes a more classical approach to London living, combining rich materials and thoughtful detailing to create a kitchen that feels both timeless and contemporary,' says Alicia Meireles, creative director, Own London.



PROJECT INSPIRATION



HANG ON

'This piece brings function and beauty to the space, defining the kitchen zone while keeping it open,' says Ben Hawkswell, senior designer at Roundhouse, of the hanging gantry. 'It aligns with the island and gives clear sight lines, while integrated lighting provides an atmospheric glow.'

HIDE AND SEEK

Concealed functionality was key to this Chamber Furniture kitchen, as shown by the alcove bar. 'When closed, the retractable doors continue the fumed oak panelling; when open, they reveal a mirrored interior with glass shelving and hanging storage,' says designer Scott Nicholson.

ON BALANCE

This Krieder kitchen is a showcase of meticulous craftsmanship. Generous expanses of cabinetry allow the beauty of the rich dark oak to shine and provide a welcome contrast to the striking veining of the Cipollino marble for an overall sense of organic luxury.

STEEL THE SHOW

This standout stainless-steel island in a Ledbury Studio kitchen clearly shows why the material is enjoying a resurgence. Here, it is elevated through custom handles, brass accents and a steel-edged limestone worktop, giving the piece an architectural, tailored presence in the space.

PHOTOGRAPHS (HANG ON) MARY WADSWORTH; (HIDE AND SEEK) WILL HOUGHTON; (ON BALANCE) DARREN CHUNG; (STEEL THE SHOW) OSKAR PROCTOR. STYLING (HANG ON) HANNAH FRANKLIN

